

UNITED STATES PUBLIC LAND SURVEY CORNER CERTIFICATE FOR

Land survey monuments situated in Section 33, Township 105 North, Range 40 West, of the Fifth Principal Meridian, Murray County, Minnesota.

Previously recorded in N/A in County Recorder's Office.

(Show reason for preparing this certificate, the evidence and detailed procedure used in establishing the corner position & monumentation found or placed.)

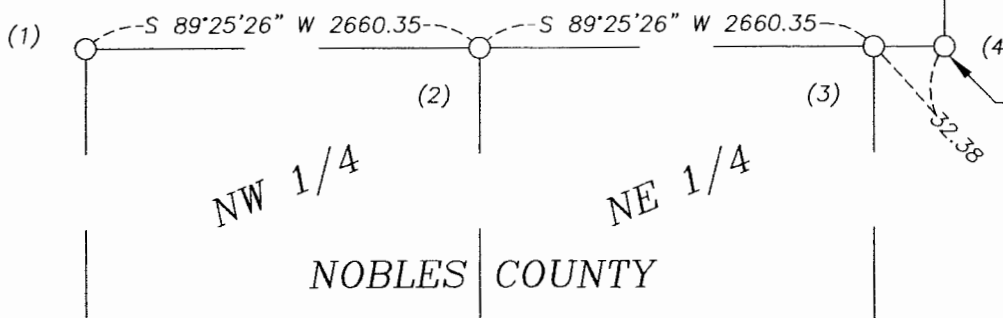
MONUMENT DESCRIPTION AND REMARKS: NW Corner - placed 1" iron pipe with survey cap #23008 in same position that Zieske Land Surveying and Bell Surveying had previously found an iron stake. NE Corner - placed 1" iron pipe with survey cap #23008 over top of 9" stone. North 1/4 Corner - placed 1" iron pipe with survey cap #23008 midway and on line between NE and NW Corners. South 1/4 Corner Sec. 33-105-40 - placed 1" iron pipe with survey cap #23008 over top of 12" X 10" stone.

PLAN-VIEW

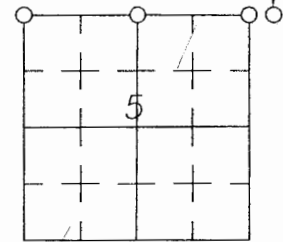
NOBLES COUNTY COORDINATES

- (1) 226991.98 N, 573002.91 E
- (2) 227018.34 N, 575663.13 E
- (3) 227044.70 N, 578323.35 E
- (4) 227044.96 N, 578355.73 E

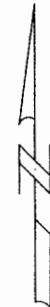
MURRAY COUNTY



SOUTH 1/4 COR.
SEC. 33-105-40



MURRAY COUNTY
S 1/4 COR. SEC. 33-105-40



I hereby certify that this land surveying document was prepared and related survey work was performed by me or under my direct supervision and that I am a duly licensed Land Surveyor under the laws of the State of Iowa.

Perry L. Zieske 9-29-06
 Signature Date
 Perry Zieske
 License number 23008
 Sheet 1 of 1

Corners to be Indexed			
Corners	Section	Township	Range
S 1/4	33	105	40